



# ROYAL FORKLIFT (SUZHOU) CO.,LTD.

No.18, Xingye Road, Baochanshan industrial park, Ma'anshan City, Anhui Province, China

Tel: +86 512 65916195

Fax: +86 512 65915205

Email: [info@ryforklift.com](mailto:info@ryforklift.com)



Royal Forklift(Suzhou) Co.,Ltd. reserves the right to make any changes without notice concerning colors, equipment or specifications detailed in this brochure, or to discontinue individual models. The configuration of trucks, delivered may differ slightly from those in brochures.



# ROUGH TERRAIN FORKLIFT

2WD 2.0-5.0T  
4WD 2.0-3.5T



[WWW.RYFORKLIFT.COM](http://WWW.RYFORKLIFT.COM)





# MAIN SPECIALIST

Compact Size Designed For European Standard

Suspension Frame and Brake Pedal

Cyclone type Pre-cleaner

High Ground Clearance

Hydraulic Transmission

Heavy Duty Truck Tyre

LED Working Lights

Powerful Engines

Wide View Mast

# VIROUS APPLICATIONS SOLUTION

Agriculture Planting

Construction Site

Timber Forestry

Landscaping

Mining



## Superior Performance in Extreme Conditions

**4WD**



Capacity 2.0-3.5 Ton

Small Turning Radius 3120mm

Wheel Hub Reduction

High Grade-ability 45-50%

Yanmar engines

2WD / 4WD Convertor Switch

**2WD**

## Strong Flexilility in Rough Terrain

Capacity 2.0-5.0 Ton

Small Turning Radius 2800mm(3.5ton)

Yanmar/Mitsubishi/Perkins engines

100% Differential Lock







**Right Positioned Lever**  
Provide the operator with the best comfort of operation position and also increase the better visibility.



**Full floating safeguard**  
Greatly improve the frame vibration. High strength roof enhances the forklift reliability and safety.



**Easy Maintenance**  
Designed larger space and compact wire distribution, it's convenient to have big checking and maintenance.



**High Ground Clearance**  
Offer greater maneuverability and keep the machine moving in the roughest of applications.



**Wide-view Mast**  
Provides excellent through the mast visibility and allow safe operation.



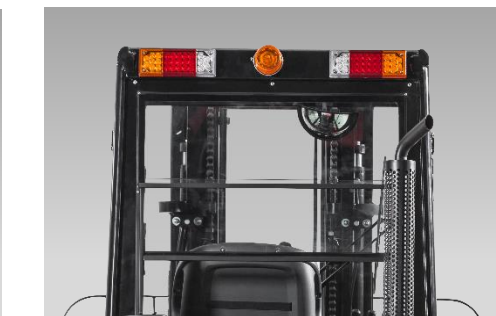
**Heavy Duty Truck Tyre**  
Industrial tyres with a wide footprint giving it greater stability and lift capacity in rough work environments.



**Suspension pedals**  
Provide extra foot space helps significantly deduct vibration from transmission.



**Small Turning Radius**  
The bigger rear wheel steering angle makes the smaller turning radius.



**LED Working Light**  
Offer a better lighting for operations and it's effective in energy conservation.





**MITSUBISHI S4S (EU111A)**  
**2WD 2-3.5Ton**

Rated output 35.3kw/2250rpm  
Rated Torque 182N.m/1800rpm



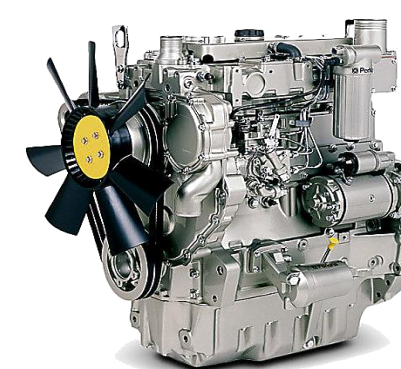
**YANMAR 4TNU94L (EU111A)**  
**2WD/4WD 2-3.5Ton**

Rated output 35.5kw/2400rpm  
Rated Torque 191N.m/1200rpm



**YANMAR 4TNE98 (EU111A)**  
**2WD/4WD 2-3.5Ton**

Rated output 42.1kw/2300rpm  
Rated Torque 196N.m/1700rpm



**PERKINS 1104C-44TA (EU111A)**  
**2WD 4.0-5.0Ton**

Rated output 74.5kw/2300rpm  
Rated Torque 415N.m/1350rpm