

ROYAL FORKLIFT (JIANGSU) CO., LTD.

www.ryforklift.com

Add / No. 58, JIGUANG ROAD, QIANDENG, SUZHOU, JIANGSU, CHINA 215341
 TEL / (86) 512-36687077 FAX / (86) 512-36687058 Email / info@ryforklift.com

*All Rights Reserved by RY Forklift.



**Heavy Duty
Forklift Truck**

5.0-10.0ton





Comfort & Ergonomics

The Right Truck For The Job
Simple to Drive and Operate
Easy Entry & Exit
Large Operation Space
Suspension Seat(option)
Excellent Visibility
Tilttable Steering Column
Multifunctional LCD Display Meter
Smoke Purification Device (Option)
Wide View Cabin (Option)

Safety Operation

Integral Heavy Duty Chassis
System of Active Stability
Mast Intelligent Buffering System
Parking Brake Warning Buzzer (Option)
Operator Presense Security System (Option)

Optional Attachments

Integrative Side Shifter
Fork Positioner
Fork Clamp
Rotating Fork
Bale Clamp

High Efficiency & Productivity

Precisely Steering
Powerful Engine
Higher Acceleration Ability
Powerful Hydraulic Transmission
Faster Lifting & Lowering Speed
Easy Operation Shift Lever
Snorkel Air Intake

Superior & Economic Serviceability

Easy Service and Maintenance Design
Central Integrated Electric System
Reliable Hydraulic System
Strong Engine Hood
Easy-open Radiator Cover

Reliable RY Forklift

Reliable Forklift Quality
Perfect After Sales Service System
Comprehensive Parts Supply System
Experienced Technical Support Team

Invisible Value

LED Combination Lamp & Reverse Warning Light
Excellent Heat-releasing Performance
Integral Overhead Guard
Stronger Wide View Mast

COMFORT & ERGONOMICS

The Right Truck For The Job

"RY 5-10Ton forklift trucks offer load capacities ranging from 5 to10 tonnes, delivering the right model for each specific customer requirement.A wide range of features and options allows you to choose the truck that meets your specific needs and keeps your business performing at the highest possible level."

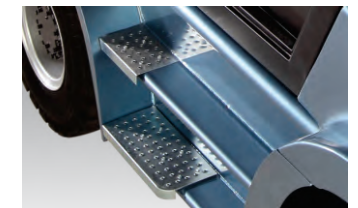


Simple to Drive & Operate

"Driver productivity has been increased by studying operational needs.Even occasional drivers will find RY heavy duty trucks simple and intuitive to drive.An inching pedal allows even more driving control when approaching racks or picking pallets."

Easy Entry & Exit

"To produce heavy duty forklifts, RY looked at the whole driver-forklift relationship and then designed a heavy-duty truck that provides excellent driver ergonomics. You'll notice the difference before you even start the smooth RY engine. First, a wide step provides easy entry and exit. This is especially welcome in applications"



Excellent Visibility

- * Newly designed backrest and fork carriage with excelled fork tip visibility
- * Super Wide view mast with hidden hose design dramatically improves the front and lifting visibility, ensuring the safety of operation.



Upward Visibility

Forward Visibility

Fork Tip Visibility

Real Visibility



Large Operation Space



"Once you are on board, ample floor space and a thick moulded rubber floor mat provide a soft, comfortable place for your feet. "With the spacious driving space and relaxing foot driving, you will enjoy each driving minute.

Suspension Seat (option)



With optional suspension seat, the operator can experience great driving comfort by adjusting the seat backrest, the seat position, and the suspension grade according to different driver's height and weight. It dramatically reduces the operator's fatigue.

COMFORT & ERGONOMICS

Multifunctional LCD Display Meter



All controls and pedals are laid out for optimized ease of use. The layout of meters and gauges in an integrated combination panel makes it simple to monitor functioning at a glance, and the greater variety of meters used assures a better awareness of vehicle status at all times. "

Tilttable Steering Column



"When operating the truck, full hydraulic power steering provides effortless manoeuvring, even with heavy loads. The tilttable steering column features a steering knob for a comfortable, relaxed grip on the wheel"

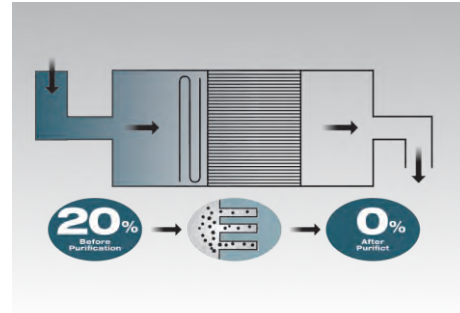


Wide View Cabin (Option)

With full glass cabin and less plastic design, the operator can wide view all surroundings easily. This can help to reduce the operator's eye fatigue and also increase the safety of driving.

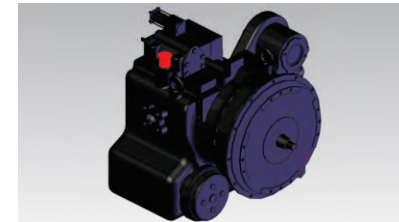
Smoke Purification Device (Option)

With optional smoke purification device, it can dramatically purify the harmful gas into harmless carbon dioxide and water vapor, reduce a lot harm to human beings and environment.



Powerful Hydraulic Transmission

The Powerful Hydraulic Transmission converts powerful acceleration response.



Easy Operation Shift Lever

"The shift lever can be operated with just the finger tips,boosting handling efficiency while reducing operator fatigue."



Snorkel Air Intake

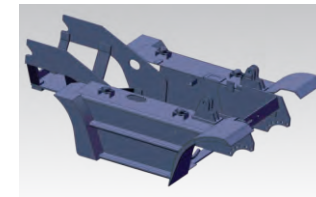
"To ensure a supply of clean air for the engine, a snorkel air intake is located on the counter weight.

SAFETY OPERATION

Mast Intelligent Buffering System

With intelligently declining buffer sensor on the two ends of the cylinder,the falling speed of the fork slows down automatically before it is 10cm from the ground, and the lifting speed to the top also slows down to avoid quick hit on the top, it super increases the safety of the goods and forklifts.

Integral Heavy Duty Chassis



An integral heavy duty chassis provides the driver with 20% more protection from falling loads.

HIGH EFFICIENCY & PRODUCTIVITY



Faster Lifting & Lowering Speed

Considering safety and energy-saving, RY Forklift attaches close attention to the development of hydraulic system, and increases lifting and lowering speed to ensure the productivity.

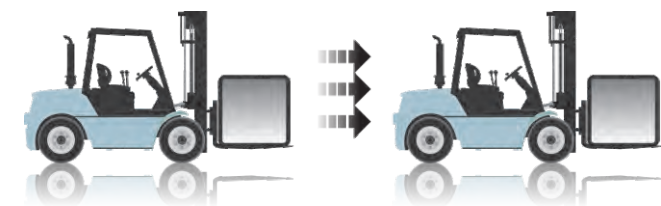
Precisely Steering

The new axle provides wider steering angles to 85 degree to present a superior smart turning radius of RY Forklift, and plus the compact design, RY forklift can navigate the narrow and congested space.

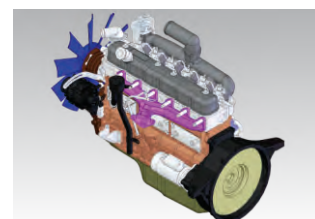


Higher Acceleration Ability

20% higher acceleration ability,surprisingly shortens the working time at the same working distance, dramatically improves the working efficiency.



Powerful Engine



"The powerful 6-cylinder diesel engine is designed to comply with the emission regulation EN 97/68 stage IIIa.



Parking Brake Warning Buzzer (Option)



An automatic-style parking brake ensures of the convenience and safety. The warning buzzer will sound when the operator leaves the seat without parking the forklift.

Operator Presense Security System (Option)



With operator presense security system, RY forklift can have the forklift stop moving forward when the operator leaves the seat which ensuring the safety of goods and people around at emergency situation.

System of Active Stability

With the SAS, the wheel and tyre can be provided from swering up and down according to the working condition to stay stability. This provides the driver with a safer and more comfortable heavy duty forklift truck.



SUPERIOR & ECONOMIC SERVICEABILITY



Easy Service & Maintenance Design

The bolt mounted foot step cover can be easily taken off to do inspection and service.

Central Integrated Electric System

The central integrated design of the electric system enables the service to be easier and faster.



Reliable Hydraulic System



With reliable hydraulic design and components, the hydraulic components are with high durability which can lower the cost in repair and replacement.



Strong Engine Hood

"The engine hood is completely sealed for maximum comfort, and opens fully to a wide 85°. A hood damper reduces the effort needed to open the hood."

Easy-open Radiator Cover

"A sealed design is used for the radiator cover as well, and easy access is assured by the handy damper, which makes opening and closing the cover a snap"



OPTIONAL ATTACHMENTS

Integrative Side Shifter

The integrative side shifter is integrated in the fork carriage. With this attachment, the fork carriage can move from left to right to precise the lifting position. Compared to the hanging-on side shifter, the load center is not with a big change, which assuring less load capacity loss at higher lifting height.

Fork Clamp

This attachment is effective for handing packed cotton or rough textile loads by grabbing them firmly from both sides.

Block Clamp

This attachment can pick up concrete blocks without using pallets.

Rotating Fork

Used together with the fork inserted container, this attachment is used for transporting items such as powder, fluids, etc. The fork is rotated in order to discharge the load.

Fork Positioner

With optional fork positioner in 5.0-7.0ton and standard in 9.0-10ton, the fork will be adjusted automatically by operating the third and forth operation lever. It dramatically improves the working efficiency and reduces the fatigue.

Roll Clamp

Rolls of paper or cylindrical objects are safely and securely handled by this attachment. It is possible to rotate the clamped load through 360 degrees.

Bale Clamp

This attachment is recommended for handling packed pulp or raw cotton. The bale is efficiently held from both sides by the bale clamps.

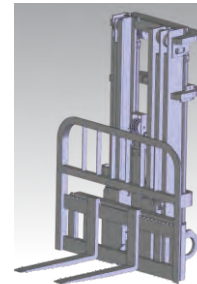
INVISIBLE VALUE

Excellent Heat-releasing Performance

Considering to improve the heat-releasing performance, RY forklift engineers design the best location of the engine fan, radiator and muffler. Together with the increased heat-release space in the counter weight, RY forklift performs at an excellent heat-releasing situation.



Stronger Wide View Mast



RY engineers design and provide you a stronger wide view mast by re-placing the position of the mast cover and tilt cylinder. By using a stronger mast corssbeam, the forklift will not easy get overshaped and stays great durability.

Integral Overhead Guard



The front pillar, the rear pillar and the top pillar all welded and interated in the same structure, it entirely increase the strength of the whole overheard guard, which providing the operator with a safer overhead guard.

LED Combination Lamp & Reverse Warning Light

LED combination Lamp is equipped on top of the overhead guard and standard on each RY forklift. Compared to normal lamp of conventional forklifts, LED lamp is lighter and with more durability. The reverse warning light will flash when you switched on the forklift and also flash when you reverse the forklift. This can warn people around and provide you with a safe working place.



RELIABLE RY FORKLIFT

Reliable Forklift Quality



With the international testing standard, more reliable supplier chain, higher quality control to ensure the stability and quality of forklifts.

Comprehensive Parts Supply System



Parts supply system complied with multi-functional parts warehouse and I-NET system, RY forklift can provide clients with different type spare parts in time and accuracy.

Experienced Technical Support Team



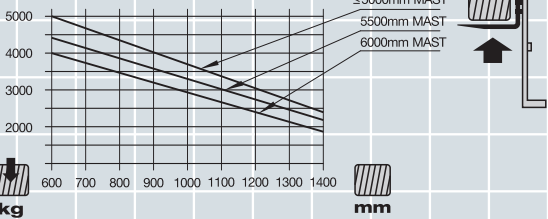
There are very experienced technical support team in RY forklift to provide professional training to clients from different country.

Perfect After Sales Service System

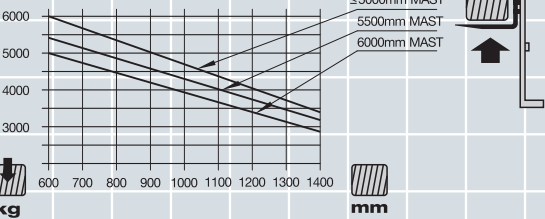
With perfect after sales service and I-NET system, RY forklift can analyze each forklift issue easier, faster and more accurate.



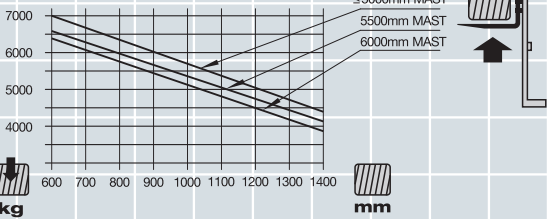
H50



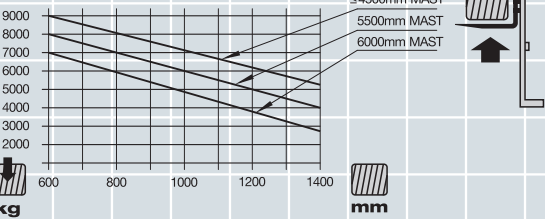
H60



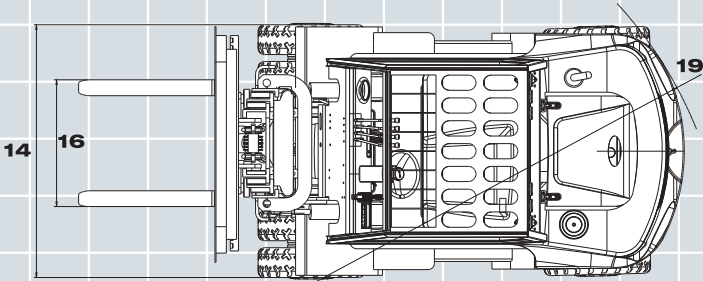
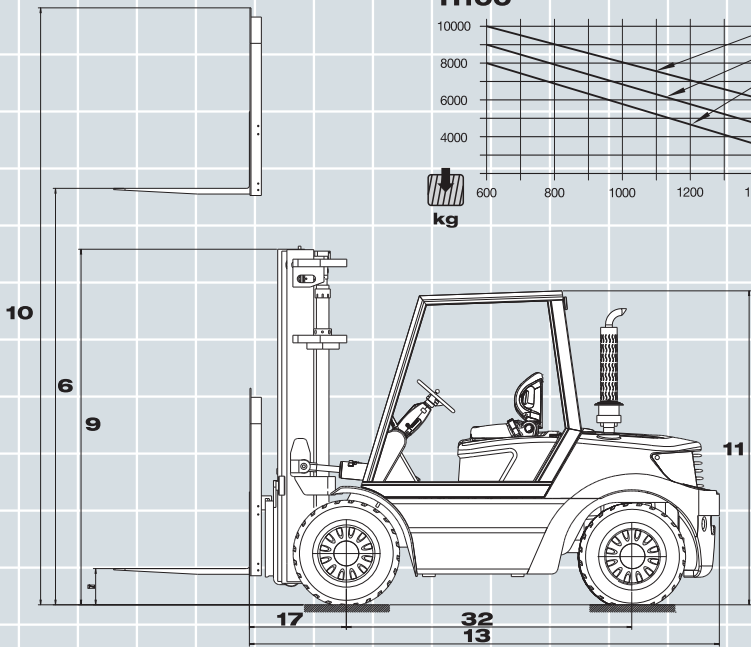
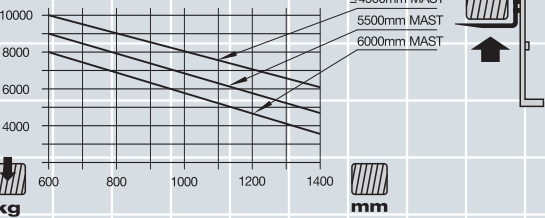
H70



H90



H100



GENERAL	1	Manufacturer		RY	RY	RY	RY	RY	RY	RY	RY	RY	RY	RY	RY	RY	
	2	Model		H50C	H60C	H70C	H90C	H100C	H50A	H60A	H70A	H90A	H100A	H50B	H60B	H70B	
	3	Power Type		Diesel	Diesel	Diesel	Diesel	Diesel	Diesel	Diesel	Diesel	Diesel	Diesel	Diesel	Diesel	Diesel	
	4	Rated Load Capacity	kg	5000	6000	7000	9000	10000	5000	6000	7000	9000	10000	5000	6000	7000	
	5	Load Centre	mm	600	600	600	600	600	600	600	600	600	600	600	600	600	
CHARACTERISTIC & DIMENSION	6	Rated Lift Height	mm	3000	3000	3000	3000	3000	3000	3000	3000	3000	3000	3000	3000	3000	
	7	Free Lift Height	mm	205	205	210	130	130	205	205	210	130	130	205	205	210	
	8	Mast Tilt Angle (F/R, α°/β°)	Deg	6°/12°	6°/12°	6°/12°	6°/12°	6°/12°	6°/12°	6°/12°	6°/12°	6°/12°	6°/12°	6°/12°	6°/12°	6°/12°	
	9	Mast Lowered Height	mm	2500	2500	2625	2850	2850	2500	2500	2625	2850	2850	2500	2500	2625	
	10	Mast Extended Height (With Backrest)	mm	4420	4420	4420	4015	4015	4420	4420	4420	4015	4015	4420	4420	4420	
	11	Overhead Guard Height	mm	2485	2485	2485	2610	2610	2485	2485	2485	2610	2610	2485	2485	2485	
	12	Ground Clearance (Bottom of Mast)	mm	200	200	200	250	250	200	200	200	250	250	200	200	200	
	13	Length to Face of Fork (Without Fork)	mm	3530	3530	3620	4300	4300	3530	3530	3620	4300	4300	3530	3530	3620	
	14	Overall Width	mm	1995	1995	1995	2165	2165	1995	1995	1995	2165	2165	1995	1995	1995	
	15	Fork Size (LxWxT)	mm	1220x150x55	1220x150x60	1220x150x65	1220x175x80		1220x150x55	1220x150x60	1220x150x65	1220x175x80		1220x150x55	1220x150x60	1220x150x65	
	16	Fork Overhang (Wheel Center to Fork Face)	mm	585	585	595	710	710	585	585	595	710	710	585	595	595	
	17	Rear Overhang	mm	670	670	750	790	790	670	670	750	790	790	670	670	750	
	18	Turning Radius (Outside)	mm	3290	3290	3370	3920	3920	3290	3290	3370	3920	3920	3280	3280	3360	
	19	"Min.Right Angle Stacking Aisle Width Add Load Length and Clearance")	mm	5215	5215	5315	5845	5915	5215	5215	5315	5845	5915	5215	5215	5315	
PERFORMANCE	20	Travel Speed (No Load)	km/h	28	28	28	30	30	30	30	28	30	30	27	26	26	
	21	Lifting Speed (Full Load)	mm/sec	400	400	330	310	310	500	500	460	310	310	400	400	330	
	22	Lowering Speed (Full Load)	mm/sec	500	500	500	500	500	500	500	500	500	500	500	500	500	
	23	Max.Drawbar Pull (Full Load)	KN	53	53	52	57	57	54	54	53	57	57	45	45	43	
	24	Max.Gradeability (Full Load)	%	32	27	24	≤20	≤20	35	32	29	≤20	≤20	20	20	20	
	25	Service Brake (Operation/Control)		Foot/Powershift				Foot/Powershift				Foot/Powershift					
	26	Parking Brake (Operation/Control)		Hand/Mechanical				Hand/Mechanical				Hand/Mechanical					
CHASSIS	27	Tyre (Front x 4)	mm	8.25-15-14PR			9.00-20-14PR		8.25-15-14PR			9.00-20-14PR		8.25-15-14PR			
	28	Tyre (Rear x 2)	mm	8.25-15-14PR			9.00-20-14PR		8.25-15-14PR			9.00-20-14PR		8.25-15-14PR			
	29	Front Tread	mm	1470	1470	1470	1600	1600	1470	1470	1470	1600	1600	1470	1470	1470	
	30	Rear Tread	mm	1700	1700	1700	1700	1700	1700	1700	1700	1700	1700	1700	1700	1700	
	31	Wheelbase	mm	2250	2250	2250	2800	2800	2250	2250	2250	2800	2800	2250	2250	2250	
WEIGHT	32	Total Weight	kg	8000	8750	9450	12200	12900	7980	8640	9350	12200	12900	7980	8640	9350	
	33	Front Axle Weight Distribution (Full Load)	kg	11600	13050	14600	19980	20610	11660	13050	14570	19980	20610	11660	13050	14570	
	34	Rear Axle Weight Distribution (Full Load)	kg	1400	1700	1850	2220	2290	1320	1590	1780	2220	2290	1320	1590	1780	
	35	Front Axle Weight Distribution (No Load)	kg	4050	3900	3850	5380	5660	4010	3880	3860	5380	5660	4010	3880	3860	
	36	Rear Axle Weight Distribution (No Load)	kg	3950	4850	5600	6820	8240	3970	4760	5490	6820	8240	3970	4760	5490	
POWER & TRANSMISSION	37	Battery	V/Ah	24/90	24/90	24/90	24/90	24/90	24/90	24/90	24/90	24/90	24/90	24/90	24/90	24/90	
	38	Engine Model		6102BG6						A-6BG1QC						S6S-T(Eu III)	
	39	Engine Manufacturer		CHAOCHAI						ISUZU						MITSUBISHI	
	40	Rated Output / r.p.m.	kw	80.9/2500						82/2000						63.9/2300	
	41	Rated Torque / r.p.m.	N.m	353/1650						416/1400—1600						285/1700	
	42	No.of Cylinder		6	6	6	6	6	6	6	6	6	6	6	6	6	
	43	Bore x Stroke	mm	102x118	102x118	102x118	102x118	102x118	105x125	105x125	105x125	105x125	105x125	105x125	94x120	94x120	94x120
	44	Displacement	L	5.785	5.785	5.785	5.785	5.785	6.494	6.494	6.494	6.494	6.494	6.494	4.966	4.966	4.966
	45	Fuel Tank Capacity	L	120	120	120	120	120	120	120	120	120	120	120	120	120	120
	46	Transmission Type		Powershift				Powershift				Powershift					
	47	Transmission Stage (FWD/RVS)		2/2	2/2	2/2	2/2	2/2	2/2	2/2	2/2	2/2	2/2	2/2	2/2	2/2	
	48	Operating Pressure (For Attachments)	Mpa	17	17	17	17	17	17	17	17	17	17	17	17	17	

* All Rights Reserved by RY Forklift.