

Anhui Royal Forklift CO., LTD.

[www.ryforklift.com](http://www.ryforklift.com)

Add / No.18, Xingye Road, Baochanshan Industrial Park, Ma'anshan City, Anhui Province, P.R. China 238100

TEL / (86)512-65916195 FAX / (86)512-65915205 Email / [info@ryforklift.com](mailto:info@ryforklift.com)

\*All Rights Reserved by Royal Forklift.



Diesel Forklift Truck  
Gasoline/LPG Forklift

1.5-5.0ton









## Comfort & Ergonomics

Smaller Steering Wheel  
Excellent Visibility  
Low Vibration & Noise  
Enlarged Operation Space  
Multifunctional LCD Display Meter  
Smoke Purification Device (Option)  
Removable Wide View Cabin (Option)  
Ergonomic Designed Operation Handler

## Safety Operation

Low Truck Gravity  
Integral Heavy Duty Chassis  
System of Active Stability  
Mast Intelligent Buffering System  
Mast Self-locking Device (Option)  
Mast Tilt-controlled Device (Option)  
Parking Brake Warning Buzzer (Option)  
Operator Presense Security System (Option)

## High Efficiency & Productivity

Faster Lifting & Lowering Speed  
Precisely Steering  
Higher Acceleration Ability  
New Brake System

## Superior & Economic Serviceability

Newly Designed Engine Cover Structure  
Easy Service and Maintenance Design  
Unique Design of Radiator Assembly  
Reliable Hydraulic System  
Central Integrated Electric System

## Reliable RY Forklift

Reliable Forklift Quality  
Perfect After Sales Service System  
Comprehensive Parts Supply System  
Experienced Technical Support Team

## COMFORT & ERGONOMICS

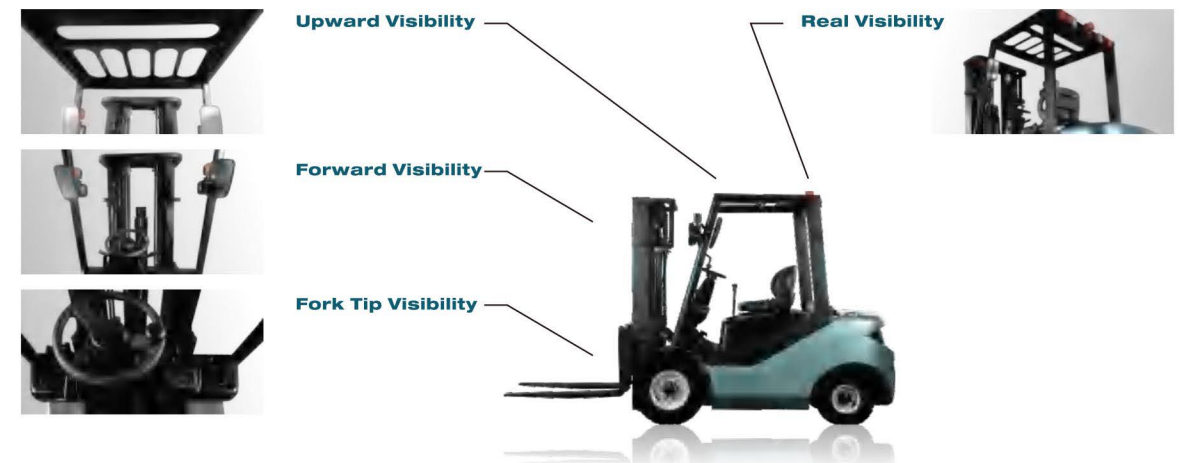
### Ergonomic Designed Operation Handler

According to the ergonomic theory, RY forklift works out the best moment arm of force, to have the operation handler in the best position. This can provide the operator with the best comfort of operation and also increase the better visibility.



### Excellent Visibility

- Newly designed backrest and fork carriage with excelled fork tip visibility
- Newly designed overhead guard with wide upward visibility
- Super Wide view mast with hidden hose design dramatically improves the front and lifting visibility, ensuring the safety of operation.
- The side angle designed counter weight clearly views the surroundings



### Low Vibration & Noise

Full suspension chassis and engine technology is completely applied to RY forklift. Divide-body design of chassis with rubber mouting between the unitary overhead guard and chassis,full floating damping device of engine, turning bridge connected flexibly and full-curve acoustic absorption, totally reduce the vibration and noise by 30% compared to conventional forklifts.With this design, RY forklift can benefit in protecting the operator and improve the operation comfort entirely.



#### A B Suspension

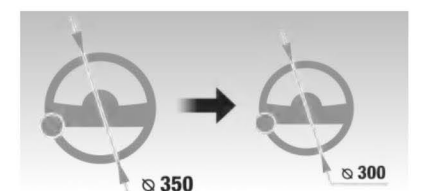
Compared with conventional forklifts,suspension cab design can lower 30% vibration during driving.

#### C Powertrain Suspension

Powertrain suspension structure limits the vibration from operation system,it can significantly reduce driver's fatigue.

### Smaller Steering Wheel

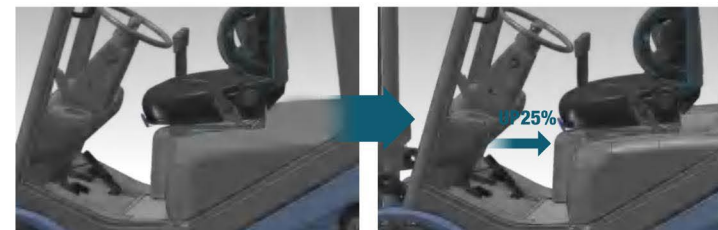
With 60mm less in diameter of the steering wheel,RY forklift dramatically improves the operation vision; it's easy to operate and reduce the operator's arm and shoulder's workload. The easy handling steering wheel column with tilt adjustment helps to provide the ideal operating position and improve the performance a lot.





## COMFORT & ERGONOMICS

### Enlarged Operation Space



Taking ergonomic design into fully consideration, RY forklift enlarges the foot operation space by 25% compared to conventional forklifts to provide operators with a surprisingly comfortable way to get through each working minute.

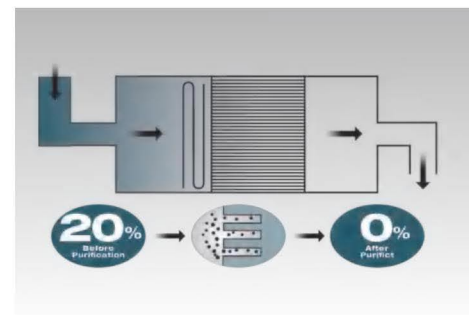
### Multifunctional LCD Display Meter



The large and easy-to-see Multifunctional LCD display meter can have the operator check on all operational status at a glance. The key components and connectors have been protected to meet rain-proof and dust-proof level.

### Smoke Purification Device (Option)

With optional smoke purification device, RY forklift can dramatically purify the harmful gas into harmless carbon dioxide and water vapor, reduce a lot harm to human beings and environment.



### Removable Wide View Cabin (Option)



Because of the new shaped tube material applied to the overhead guard, the cabin can be removable easily. With full glass cabin and less plastic design, the operator can wide view all surroundings easily.

## HIGH EFFICIENCY & PRODUCTIVITY

### Faster Lifting & Lowering Speed

Considering safety and energy-saving, RY Forklift attaches close attention to the development of hydraulic system, and increases lifting and lowering speed to ensure the productivity.



### Precisely Steering

The new axle provides wider steering angles to 85 degree to present a superior smart turning radius of RY Forklift, and plus the compact design, RY forklift can navigate the narrow and congested space.



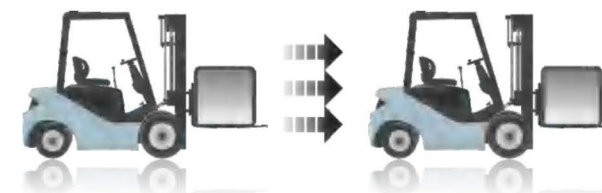
### New Brake System

New brake system and compounding braking assembly applied to RY Forklift to increase the braking effect and safety, and enhance the productivity.



### Higher Acceleration Ability

20% higher acceleration ability, surprisingly shortens the working time at the same working distance, and dramatically improves the working efficiency.



## SAFETY OPERATION

### Low Truck Gravity

According to the Gravity Balance Principle, low gravity design is applied to RY Forklift to ensure the stable and safe operations.



### Integral Heavy Duty Chassis



An integral heavy duty chassis provides the driver with 20% more protection from falling loads. RY forklift chassis is 15% heavier than conventional forklifts to ensure more stability and safety.

### System of Active Stability

With the SAS, the wheel and tyre can be provided from swerving up and down according to the working condition to stay stability.



### Mast Self-locking Device (Option)

For conventional forklifts, when mast extended and forklift powered off, the operator can still lower the mast. For RY forklift, with optional mast self-locking device, the forklift will be locked and lifting & lowering can not be operated in order to avoid from some unexpected accidents.



### Mast Intelligent Buffering System



With intelligently declining buffer sensor on the two ends of the cylinder, the falling speed of the fork slows down automatically before it is 10cm from the ground, and the lifting speed to the top also slows down to avoid quick hit on the top, it super increases the safety of the goods and forklifts.



## SAFETY OPERATION

## Mast Tilt-controlled Device (Option)

With mast tilt-controlled device, RY forklift can decelerate as the lifting height increases when the tilt angle over 3M. Thus, it can prevent the cargo from falling when lifting and avoid unnecessary loss and accidents.



## Operator Presense Security System (Option)

With operator presense security system, RY forklift can have the forklift stop moving forward when the operator leaves the seat which ensuring the safety of goods and people around at emergency situation.



## Parking Brake Warning Buzzer (Option)

An automatic-style parking brake ensures of the convenience and safety. The warning buzzer will sound when the operator leaves the seat without parking the forklift.



## SUPERIOR &amp; ECONOMIC SERVICEABILITY

## Newly Designed Engine Cover Structure

With stronger and high intensity spring, the newly designed engine cover can be open at 75 degree to provide super wide space for inspection and service.



## Unique Design of Radiator Assembly

Unique design of the radiator assembly, the counter weight is not need to be dismantled when replacing new radiator. It is easy to maintain and replace the radiator.



## Reliable Hydraulic System

With reliable international standard of hydraulic design and components, the hydraulic components are with high durability which can lower the cost in repair and replacement.



## Easy Service &amp; Maintenance Design

The bolt mounted foot step cover can be easily taken off to do inspection and service. This design increases the space of maintenance and lowers the maintenance cost to the least.



## Central Integrated Electric System

RY adopts industrial electric system design. The central integrated design of the electric system enables the service to be easier and faster.



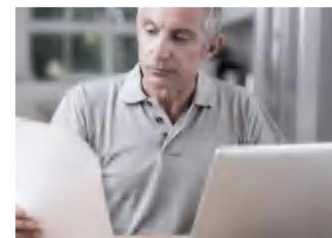
## RELIABLE RY FORKLIFT

## Reliable Forklift Quality



With the international testing standard, more reliable supplier chain, higher quality control to ensure the stability and quality of forklifts.

## Comprehensive Parts Supply System



Parts supply system complied with multi-functional parts warehouse and I-NET system, RY forklift can provide clients with different type spare parts in time and accuracy.

## Experienced Support Team



There are very experienced technical support team in RY forklift to provide professional training to clients from different country.

## Perfect After Sales Service System

With perfect after sales service and I-NET system, RY forklift can analyze each forklift issue easier, faster and more accurate.



## GASOLINE/LPG FORKLIFT TECHNOLOGY ADVANTAGE



Compared to conventional forklifts, RY Gasoline & LPG forklift has a super wide rear view for greater reversing safety by lowering the position of the LPG tank.



RY Gasoline/LPG forklift can be easily installed and removed in one minute. This ergonomic designed gas bracket is standard in each Gasoline/LPG forklift.



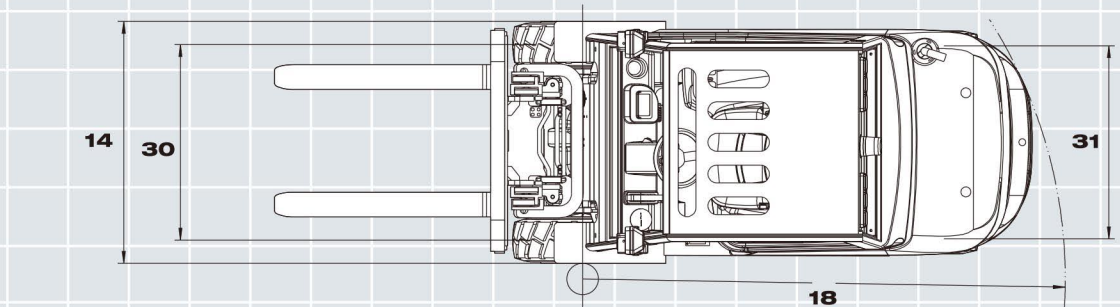
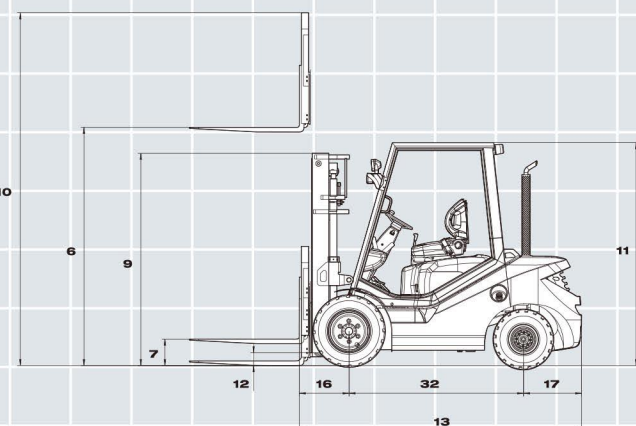
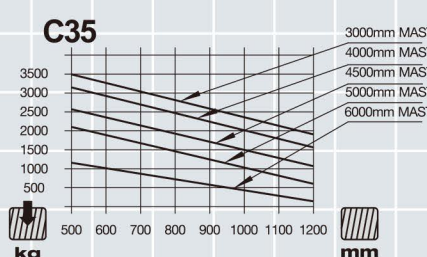
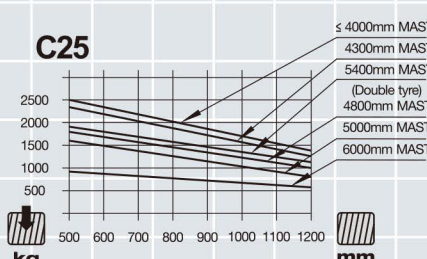
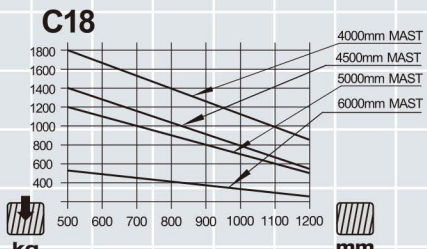
The single fuel (Gasoline) and dual fuel (Gasoline & LPG) with USA brand Impco convertor are available in RY forklift range. RY Gasoline/LPG forklift is also equipped with branded engine, quality components, professional quality control system to extend the service life and also provides clients with extremely comfort and productivity.

## Ternary Purification Device (option)

The accelerant and harmful gas in this device can take place the chemical reaction. This device is usually used in the Gasoline and LPG forklifts. RY FORKLIFT adopt multiple purification and filter system, which can purify exhaust more effectively and minimize the harm to human beings and environment. It can transform toxic and harmful gas into harmless carbon dioxide and water vapor, therewith reaches environmental protection purpose.







GENERAL	1	Manufacturer		RY	RY	RY	RY	RY	RY	RY	RY	RY	RY	RY	RY	RY	RY	RY	RY	RY							
	2	Model		C15F	C18F	C20J	C25J	C30J	C35D	C20F	C25F	C30F	C20E	C25E	C30E	C35E	C40E	C45E	C50E	C15/18NG (C15/18N)	C20/25HG (C20/25H)	C30/35HG (C30/35H)					
	3	Power Type		Diesel	Diesel	Diesel	Diesel	Diesel	Diesel	Diesel	Diesel	Diesel	Diesel	Diesel	Diesel	Diesel	Diesel	Diesel	Diesel		Gasoline/LPG						
	4	Rated Load Capacity	kg	1500	1800	2000	2500	3000	3500	2000	2500	3000	2000	2500	3000	3500	4000	4500	5000	1500/1800	2000/2500	3500					
	5	Load Centre	mm	500	500	500	500	500	500	500	500	500	500	500	500	500	500	500	500	500	500	500					
CHARACTERISTIC & DIMENSION	6	Rated Lift Height	mm	3000	3000	3000	3000	3000	3000	3000	3000	3000	3000	3000	3000	3000	3000	3000	3000	3000	3000	3000					
	7	Free Lift Height	mm	135	135	140	140	145	150	140	140	140	145	140	140	145	150	150	135	135	135	140	145/150				
	8	Mast Tilt Angle (F/R, α° / β° )	Deg	6°/10°	6°/10°	6°/12°	6°/12°	6°/12°	6°/12°	6°/12°	6°/12°	6°/12°	6°/12°	6°/12°	6°/12°	6°/12°	6°/12°	6°/12°	6°/12°	6°/10°	6°/12°	6°/12°					
	9	Mast Lowered Height	mm	2040	2040	2045	2045	2060	2060	2045	2045	2060	2045	2045	2060	2060	2070	2260	2260	2040	2045	2060					
	10	Mast Extended Height (With Backrest)	mm	3984	3984	4145	4145	4160	4160	4145	4145	4160	4145	4145	4160	4160	4170	4266	4266	3984	4145	4160					
	11	Overhead Guard Height	mm	2134	2134	2180	2180	2192	2192	2180	2180	2192	2180	2180	2192	2192	2200	2370	2370	2134	2180	2192					
	12	Ground Clearance (Bottom of Mast)	mm	120	120	130	130	145	145	130	130	145	130	130	145	145	145	170	170	120	130	145					
	13	Length to Face of Fork (Without Fork)	mm	2286	2337	2625	2625	2716	2780	2625	2625	2716	2625	2625	2716	2780	2968	3068	3068	2866/2337	2625	2716/2780					
	14	Overall Width	mm	1120	1120	1150	1150	1225	1225	1150	1150	1225	1150	1150	1225	1225	1414	1485	1485	1120	1150	1225					
	15	Fork Size (L×W×T)	mm	920x100x35		1070x125x40		1070x125x45		1070x125x40		1070x125x45		1070x125x40		1070x125x45		1070x125x50		1070x150x50	920x100x35	1070x125x40	1070x125x45				
	16	Fork Overhang (Wheel Center to Fork Face)	mm	421	421	473	473	478	478	473	473	478	473	473	478	478	493	578	578	421	473	478					
	17	Rear Overhang	mm	465	516	508	508	578	642	508	508	578	508	508	578	642	586	590	590	465/516	508	578/642					
	18	Turning Radius (Outside)	mm	2078	2113	2315	2315	2420	2490	2315	2315	2420	2315	2315	2420	2490	2670	2790	2790	2078/2113	2315	2420/2490					
	19	Working Aisle With Pallet(Ast)*, 1000x1200 Crossway	mm	3740	3740	4010	4010	4120	4190	4010	4010	4120	4010	4010	4120	4190	4550	4770	4770	3740	4010	4120/4190					
	PERFORMANCE	20	Travel Speed (No Load)	km/h	14.5	14.5	20	20	20	20	20	20	20	20	20	20	20	20	20	20	14.5	20	20				
		21	Travel Speed (Full Load)	km/h	13.5	13.5	19	19	18.5	18.5	19	19	18.5	19	19	18.5	18.5	18	19	19	13.5	19	18.5				
		22	Lifting Speed (Full Load)	mm/sec	500	500	510	510	430	400	510	510	410	510	510	430	400	360	450	450	500	490	390/360				
		23	Lowering Speed (Full Load)	mm/sec	450	450	450	450	450	450	450	450	450	450	450	450	450	425	480	480	450	450	450				
		24	Max.Drawbar Pull (Full Load)	KN	22(18)	22(18)	17(14.5)	17(14.5)	16(15.7)	24(19.5)	17(13.7)	17(13.7)	18.5(14.8)	17(13.5)	17(13.5)	16(15.7)	24(19.5)	17(15)	17(14.5)	17(14.5)	17(15)	22(18)	22(18)				
25		Max.Gradeability (Full Load)	%	20	20	20	20	20	20	20	20	20	20	20	20	20	15	20	20	20	20	20/18					
26		Service Brake (Operation/Control)		Foot/Powershift					Foot/Powershift					Foot/Powershift					Foot/Powershift					Foot/Powershift			
27	Parking Brake (Operation/Control)		Hand/Mechanical					Hand/Mechanical					Hand/Mechanical					Hand/Mechanical					Hand/Mechanical				
CHASSIS	28	Tyre (Front x 2)	mm	6.50-10-10PR		7.00-12-12PR		28x9-15-12PR		7.00-12-12PR		28 x 9-15-16PR		7.00-12-12PR		28x9-15-12PR		250-15-16PR		300-15-18PR		6.50-10-10PR		7.00-12-12PR		28 x 9-15-12PR	
	29	Tyre (Rear x 2)	mm	5.00-8-10PR		6.00-9-10PR		6.50-10-10PR		6.00-9-10PR		6.50-10-10PR		6.00-9-10PR		6.50-10-10PR		6.50-10-10PR		7.0-12-12PR		5.00-8-10PR		6.00-9-10PR		6.50-10-10PR	
	30	Front Tread	mm	890	890	970	970	1000	1000	970	970	1000	970	970	1000	1000	1160	1180	1180	890	970	1000					
	31	Rear Tread	mm	920	920	980	980	980	980	980	980	980	980	980	980	980	980	1190	1190	920	980	980					
	32	Wheelbase	mm	1400	1400	1650	1650	1700	1700	1650	1650	1700	1650	1650	1700	1700	1900	2000	2000	1400	1650	1700					
WEIGHT	33	Total Weight	kg	2590	2820	3450	3620	4310	4750	3450	3620	4310	3450	3620	4310	4750	5170	6800	7100	2590/2820	3450/3620	4310/4750					
	34	Front Axle Weight Distribution (Full Load)	kg	3557	3950	4856	5372	6490	7320	4856	5372	6490	4856	5372	6490	7320	8120	9750	10500	3557/3950	4856/5372	6490/7320					
	35	Rear Axle Weight Distribution (Full Load)	kg	535	650	594	748	820	930	594	748	820	594	748	820	930	1050	1550	1600	535/650	594/748	820/930					
	36	Front Axle Weight Distribution (No Load)	kg	1070	1170	1507	1492	1764	2040	1507	1492	1764	1507	1492	1764	2040	2120	2710	2680	1070/1170	1507/1492	1764/2040					
	37	Rear Axle Weight Distributi on (No Load)	kg	1522	1632	1943	2128	2546	2710	1943	2128	2546	1943	2128	2546	2710	3050	4090	4420	1522/1632	1943/2128	2546/2710					
POWER & TRANSMISSION	38	Battery	V/Ah	12/60	12/60	12/90	12/90	12/90	12/90	12/90	12/90	12/90	12/90	12/90	12/90	12/90	24/90	24/90	12/60	12/60	12/60						
	39	Engine Model		AK- C240PKJ30		C490BPG (Eu III)		A498 (Eu III)		C240PKJ30 (Eu III)				S4S(Eu III)				S6S		K21		K25	K25				
	40	Engine Manufacturer		ISUZU		XINCHAI		XINCHAI		ISUZU				MITSUBISHI				MITSUBISHI				NISSAN					
	41	Rated Output / rp.m.	kw	34.3/2500		37/2650		45/2550		34.5/2500				41.8/2300				57/2200		31.2/2500		44.2/2500					
	42	Rated Torque / rp.m.	N·m	137.7/1800		148/1800-1900		195/1600-1800		139/1800				182/1800		176/1800		285/1300-1500		143.7/1800		186.2/1600					
	43	No. of Cylinder		4	4	4	4	4	4	4	4	4	4	4	4	4	4	4	4	4	4	4					
	44	Bore x Stroke	mm	86x102	86x102	90x100	90x100	90x100	98x110	86x102	86x102	86x102	94x120	94x120	94x120	94x120	94x120	108x125	108x125	89X83	92x93	92x93					
	45	Displacement	cc	2369	2369	2540	2540	2540	3168	2368	2368	2368	3331	3331	3331	3331	3331	4578	4578	2065	2472	2472					
	46	Fuel Tank Capacity	L	38	38	50	50	50	50	50	50	50	50	50	50	50	60	90	90	38	50	50					
	47	Transmission Type		Powershift		Powershift		Powershift		Powershift		Powershift		Powershift		Powershift		Powershift		Powershift		Powershift					
	48	Transmission Stage (FWD/RVS)		1/1	1/1	1/1(2/2)	1/1(2/2)	1/1(2/2)	1/1(2/2)	1/1(2/2)	1/1(2/2)	1/1(2/2)	1/1(2/2)	1/1(2/2)	1/1(2/2)	1/1(2/2)	1/1(2/2)	1/1	1/1	1/1	1/1(2/2)	1/1(2/2)	1/1(2/2)				
	49	Operating Pressure (For Attachments)	Mpa	14.5	14.5	17.5	17.5	17.5	17.5	17.5	17.5	17.5	17.5	17.5	17.5	17.5	17.5	19	19	14.5	17.5	17.5					

**\*All Rights Reserved by RY Forklift.**